

1317 Summer Street Levensburg, FL 34748
P: 352.292.1121 • F: 352.278.4292
AR000608 • CB C060129

DESIGN / BUILD SPECIALISTS

SENATORE INC.

JAMES P. SENATORE, ARCHITECT • SENATORE CONSTRUCTION

2017

DATE

DESCRIPTION

#

DESIGN / BUILD SPECIALISTS

SENATORE INC.

JAMES P. SENATORE, ARCHITECT • SENATORE CONSTRUCTION
1317 Summer Street Levensburg, FL 34748 • P: 352.292.1121 • F: 352.278.4292 • AR000608 • CB C060129
and he has to be copied in Whole or Part Without The Written Permission of James P. Senatore, Architect.

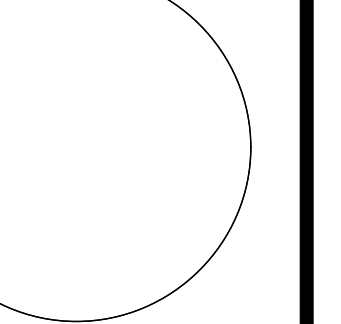
First Contact Ministries
North Carolina

SECOND FLOOR

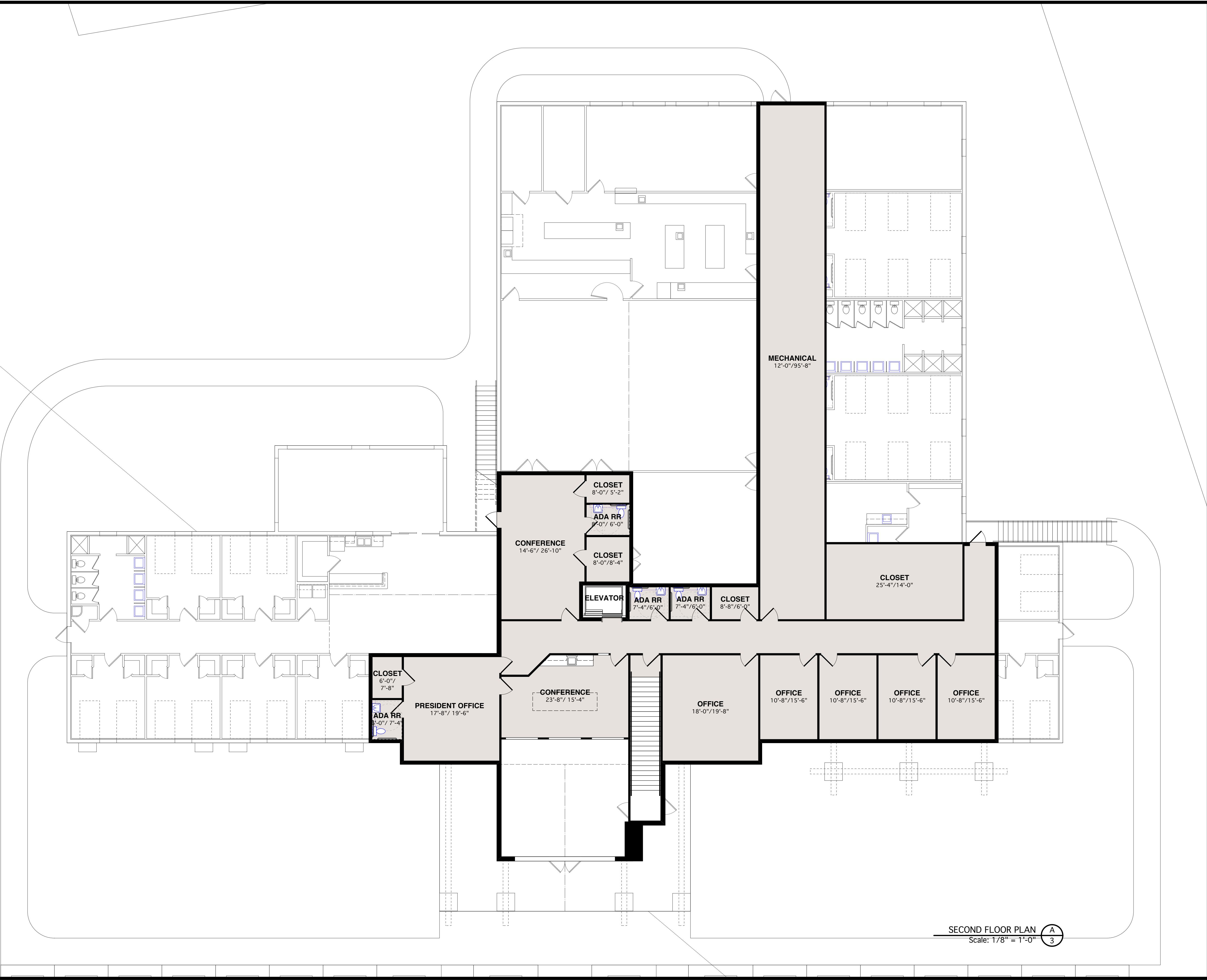
DRAWING NO.: 2017 SHEET
DATE: 10.18.17
DESIGNED BY: JPS
DRAWING BY: CAZ
CHECKED BY: JPS

3

James P. Senatore
Architect



Florida No. AR 0006808



SECOND FLOOR PLAN A
3
Scale: 1/8" = 1'-0"